





Major Andrew Montgomery

CVE Adjutant

Georgia Department of Public Safety
Commercial Vehicle Enforcement (CVE)

Value & Types of Partnerships

- **John F. Kennedy:**

"Partnership is not a posture but a process — a continuous process that grows stronger each year as we devote ourselves to common tasks."

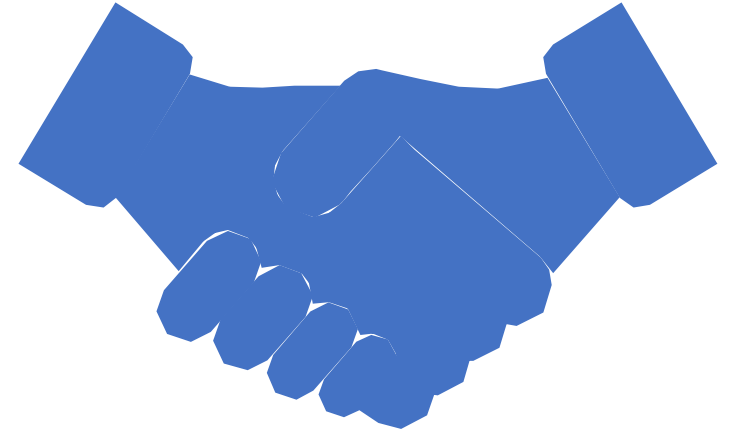
- **Henry Ford:**

"If everyone is moving forward together, then success takes care of itself."



Types of Partnerships

- Vendor
- Industry
- Legislative
- Agencies



Vendor Partnership

- Provide advanced tools, technology, and training to improve inspection accuracy and efficiency.
- Deliver innovative solutions and ongoing support that enhance enforcement capabilities.
- Foster collaborative research and pilot programs that test emerging technologies in real-world enforcement environments.



How We Got Started

The partnership between Georgia DPS & CAPS began in 2017 to enhance CMV safety using data-driven solutions

United by a common goal: saving lives and reducing crashes on Georgia's roads

Partnership that Serves Georgia

The Georgia Reporting Incident Dashboard (GRID) Project – Partnership in Action

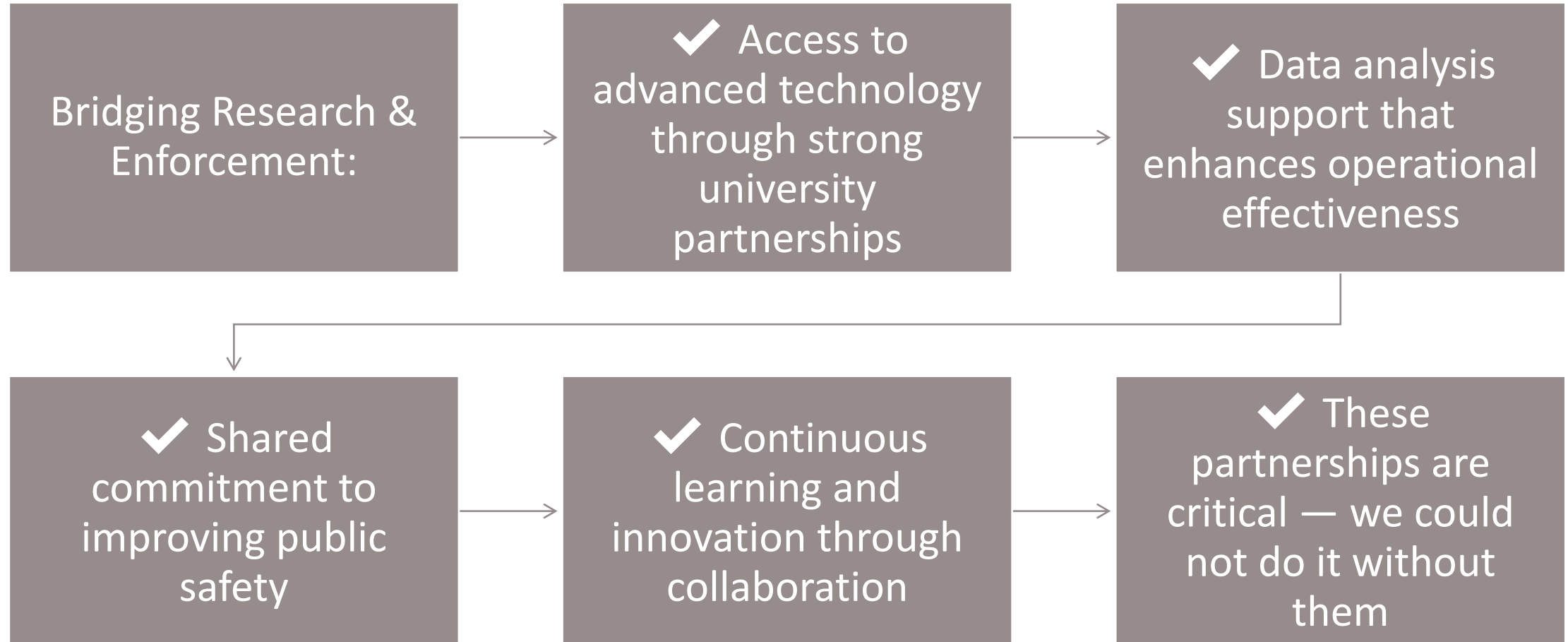


GRID: REAL-TIME CRASH AND
ENFORCEMENT DATA PLATFORM



DEVELOPED WITH UNIVERSITY
PARTNER (CAPS) TO DRIVE
ENFORCEMENT STRATEGIES

Working with University Partners





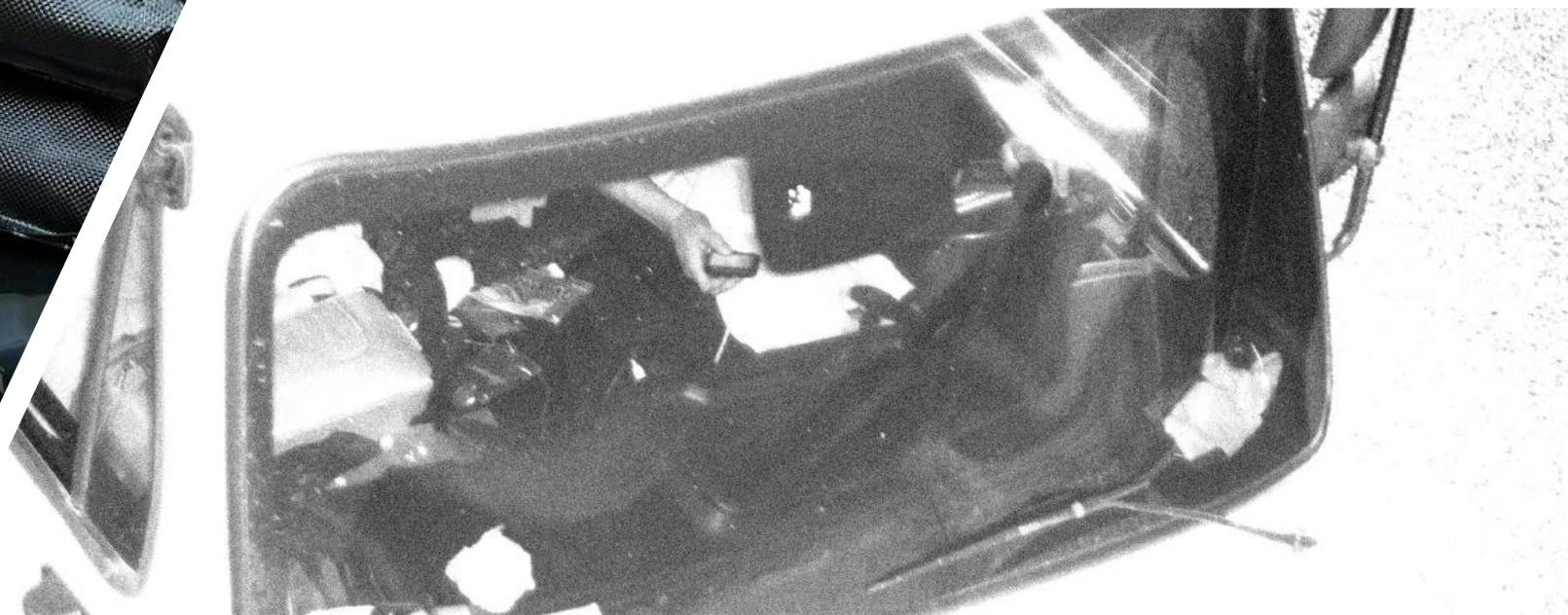
Example of
Vendor
Partnership
that Enhances
Enforcement
Capabilities

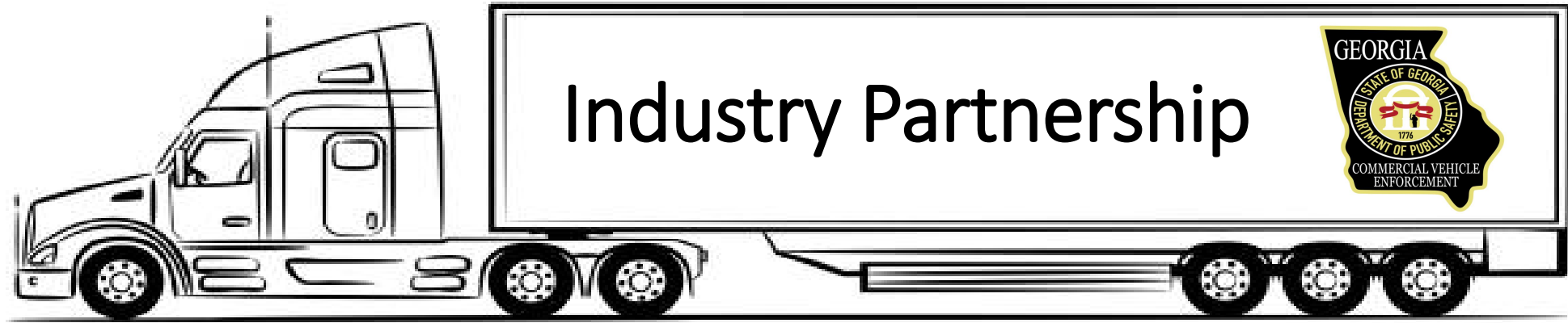
- Distracted Driving Enforcement
- Seat Belt Enforcement
- Human Trafficking Interdiction
- Drug Interdiction





**CMV Drug
Interdiction Technology**





- Build trust and promote safety by working directly with carriers and drivers.
- Improve compliance through education, outreach, and collaborative safety initiatives.
- Strong partnerships with State Motor Trucking Associations to expand outreach and promote industry-wide safety.



Legislative Partnership

- Shape effective laws, secure funding, and ensure agencies have the tools they need.
- Create consistent policies that balance safety, commerce, and enforcement practicality.
- Enhance collaboration between state agencies and lawmakers to align resources, priorities, and enforcement strategies.

Multi-Agency Partnership


- Strengthen coordination and information sharing across local, state, and federal agencies.
- Work with local county and city officials to support roadway safety.
- Collaborate with FMCSA and CVSA to promote regulatory consistency, enhance enforcement effectiveness, and support safe, efficient commerce.





Conclusion

Partnerships drive success in commercial vehicle enforcement. By working together with vendors, industry, legislators, and other agencies, we create smarter strategies, better tools, and stronger compliance — all leading to fewer crashes, safer roads, and saved lives.





Major Andrew Montgomery

CVE Adjutant

404-858-5419

amontgomery@gsp.net

Capt. Jonathon Huff

Executive Officer

404-922-8698

jhuff@gsp.net

